

Your Logo



Grandfield Way, North Hykeham, Lincoln, LN6 9NZ

Guide Price £385,000

4 2

FAMILY FAVOURITE. This modern home has been improved & modernised over recent years by the owner to include a Sota Living bespoke kitchen, new flooring, internal doors and en-suite and bathroom. The spacious accommodation includes a breakfast bar into the dining area, kitchen and separate utility room, downstairs toilet, lounge, conservatory, four double bedrooms as well as the en-suite shower room and family bathroom. To the outside is a good sized rear garden, driveway and single garage. Property Ref: MH0883

- Modern family home
- Modernised & improved
- High specification
- Sota Living kitchen
- Breakfast bar
- Conservatory

Your Logo



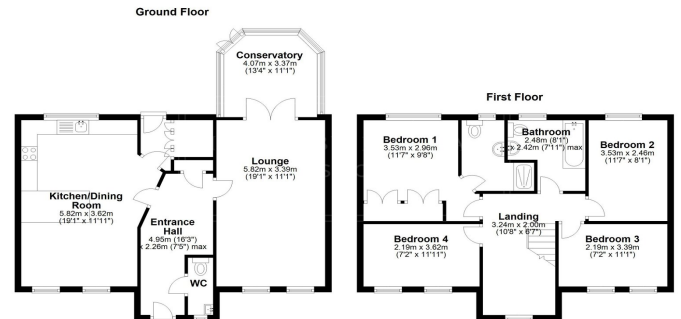
Floor Area: sq. ft.

Tenure: Freehold

Service Charge: £0 per annum

Ground Rent: £0 per annum

Score	Energy rating	Current	Potential
92+	A		
81-91	B		88 B
69-80	C	78 C	
55-68	D		
39-54	E		
21-38	F		
1-20	G		



The graph shows this property's current and potential energy rating.